



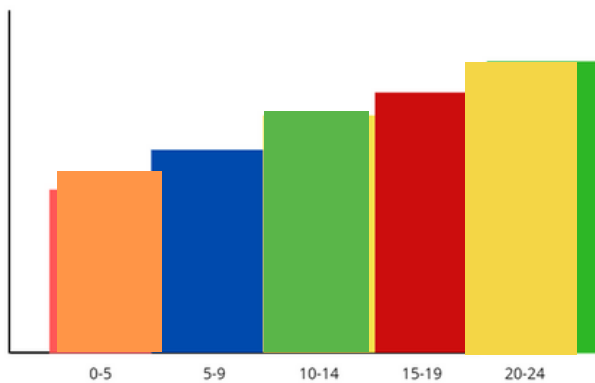
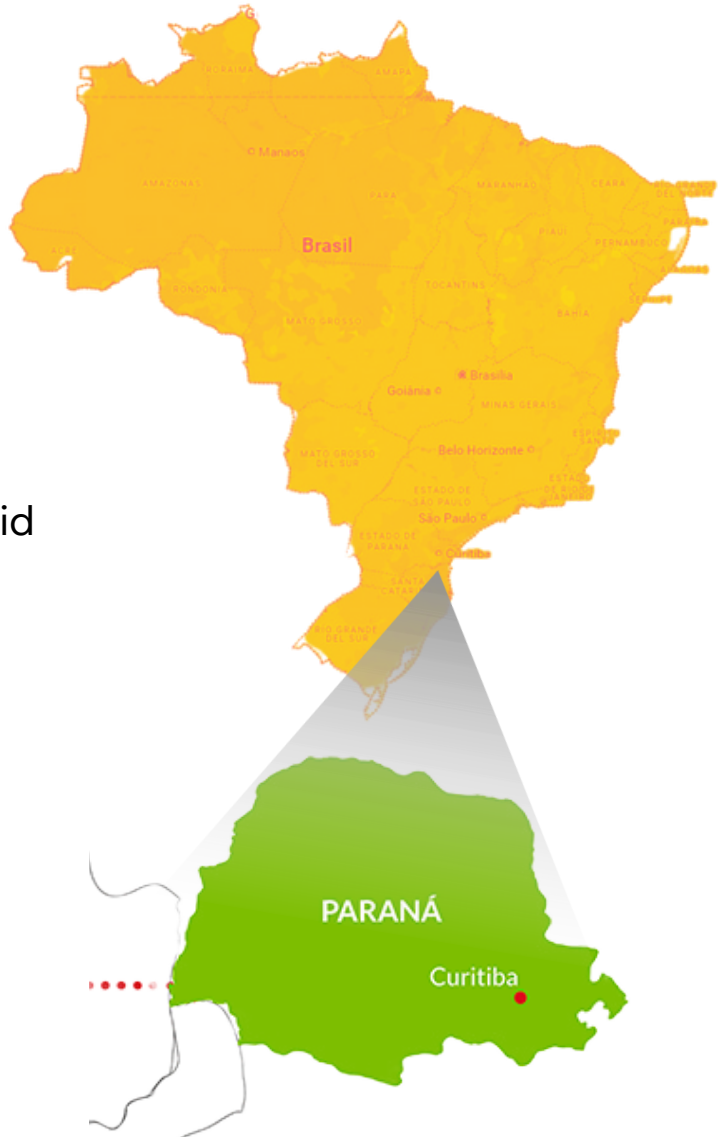
# CURITIBA

BRASIL

PADRE ANCHIETA STREET

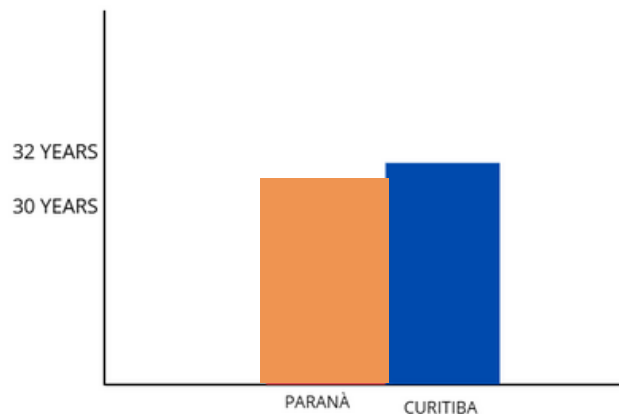
# PADRE ANCHIETA STREET

- Curitiba, capital of Paraná, is known for its focus on sustainability and green initiatives.
- The city's humid subtropical climate supports its urban vegetation.
- It has a highly efficient Bus Rapid Transit (BRT) system.
- With over 30 parks, Curitiba improves air quality, manages flooding, and conserves biodiversity.
- The city is a global model for sustainable urbanism, inspiring others to balance growth with environmental care.



- The market provides fresh food to young locals.

- It serves as a gathering space for families and pet owners.
- Merchants sell local products, boosting the economy.



# SOLUTIONS



## Tactical urbanism



## Tactical urbanism

Divided containers will be installed for proper waste separation in the market.

Recycled materials will be used in community projects, fostering a circular economy.

This promotes recycling and reduces environmental impact.



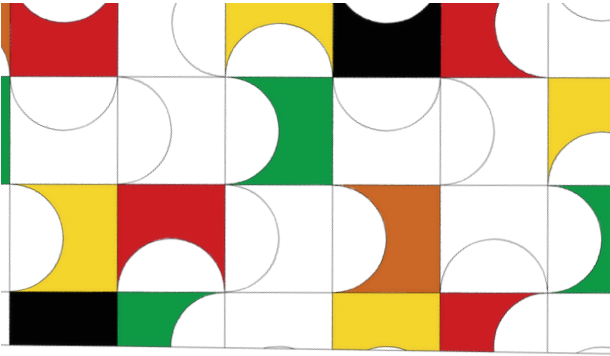
Recycling station with three HDPE containers.

# PROBLEM

- Unsafe
- Dangerous crosswalks.
- Vandalism.
- Lack of infrastructure for cyclists.
- Road obstruction
- Zero accessibility to owners



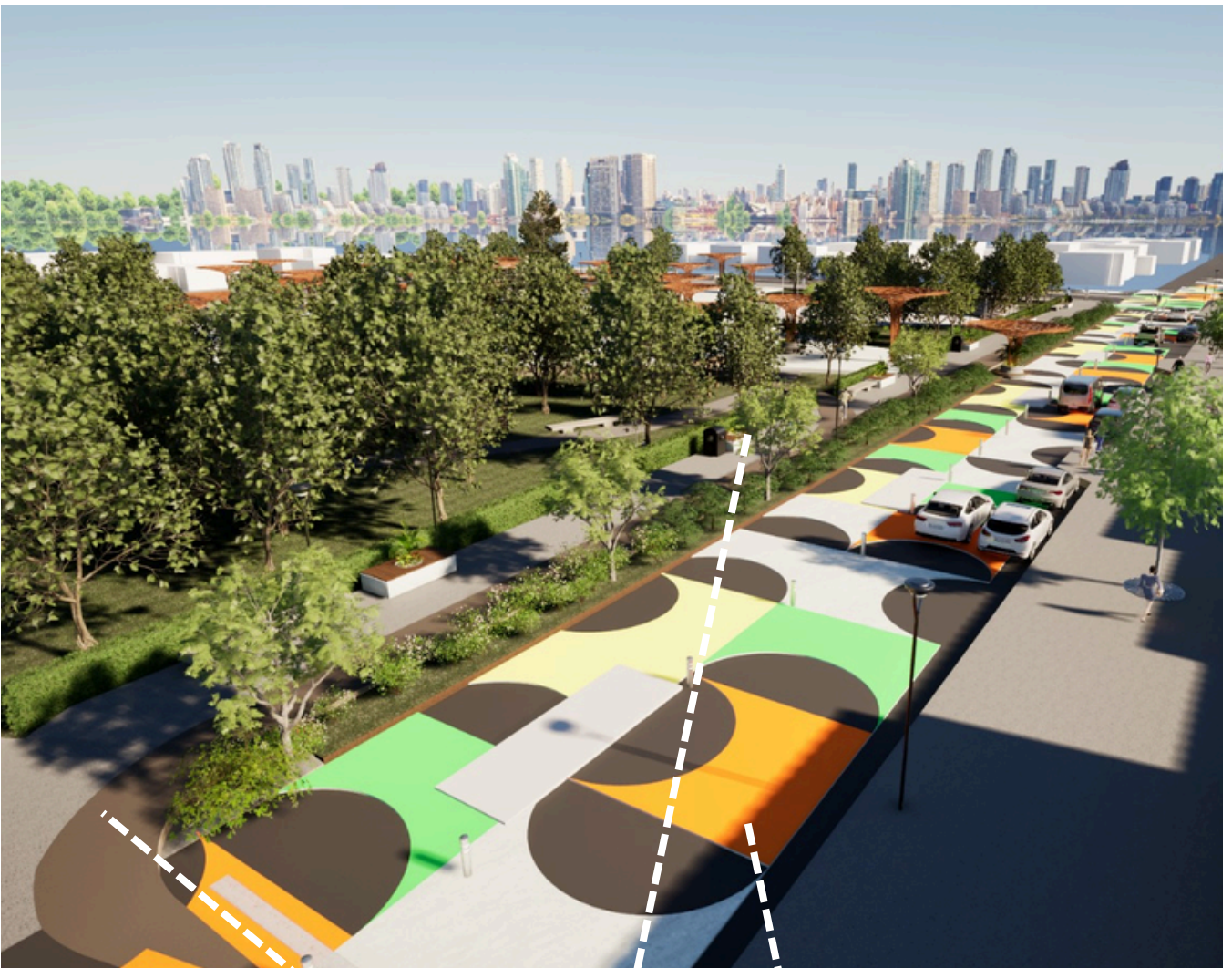
# CONCEPT



## The ecosystem

It is the group of living beings that inhabit a determined area and that, through diverse processes, interact with each other, generating an ecological balance.

## COLOR PALETTE



- Permeable concrete
- Recycled wood
- Eco-Friendly Paint

## MATERIALS

# ENERGY EFFICIENCY

Piezoelectric tiles generate clean energy by converting footfall pressure into electricity, making them ideal for high traffic areas. These tiles can power low-power devices, such as LED lights or chargers, by harnessing the movement of people to efficiently produce renewable energy.



## SOLAR PANELS

Transform solar energy into electricity through solar panels and store it in batteries for efficient use.



## BIKEWAY

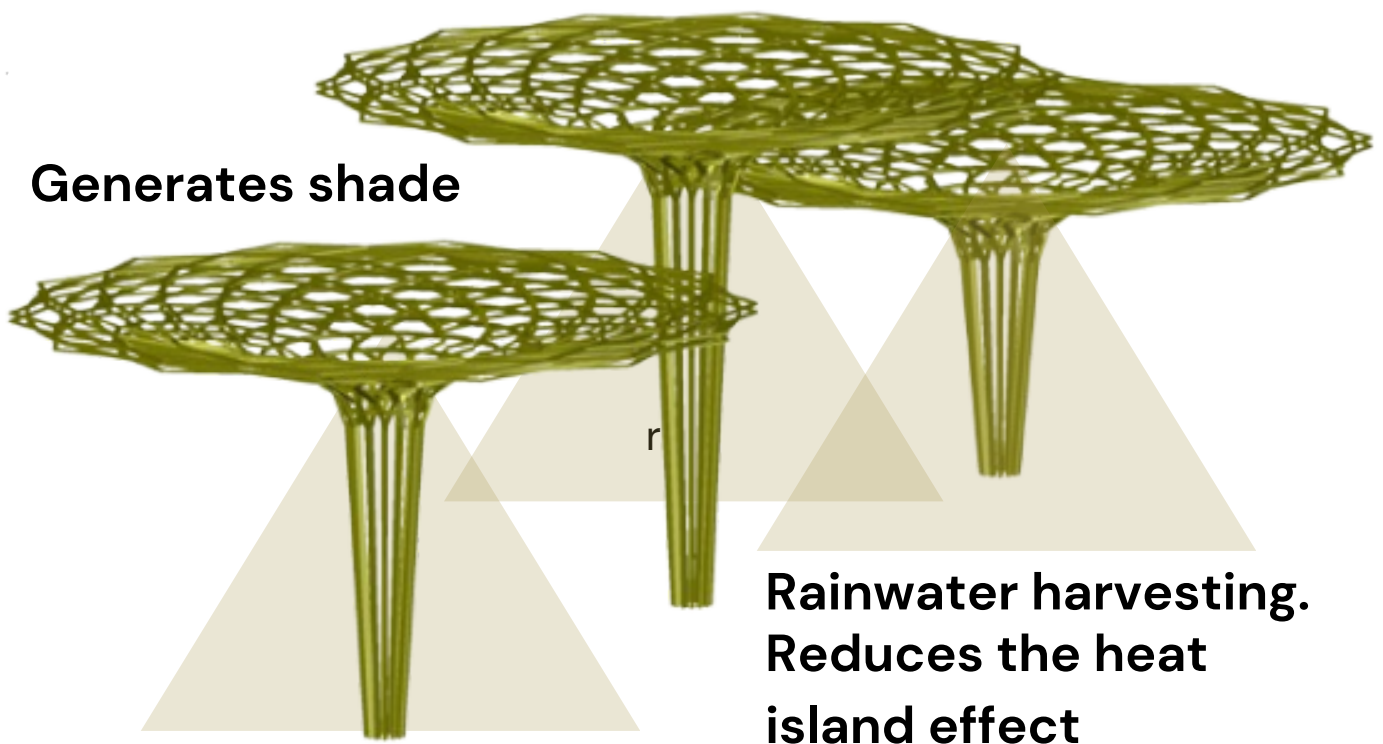
Design an adequate structure that allows bicyclists to move safely and efficiently in and around the park.



# DESIGN FLEXIBILITY AND ADAPTABILITY

The project will include a water conservation and collection system through a modular structure designed to efficiently capture rainwater.

This solution will allow for its storage, promoting the sustainable use of water resources in the environment.



## CERTIFICATIONS

### How to achieve LEED certification in public space

- Resource efficiency: Use natural resources to create microclimates and reduce heat islands.
- Site sustainability: Generate energy from pedestrian movement and produce compost from waste.
- Connectivity: Design near public transport routes, encouraging biking and transit use.
- Environmental quality: Plant trees to improve air quality, lower temperatures, and manage waste to prevent infections.
- Innovation: Use piezoelectric flooring to generate clean energy from foot traffic.

# COMMUNITY PARTICIPATION

1

Residents will paint the path to the market, symbolizing belonging.

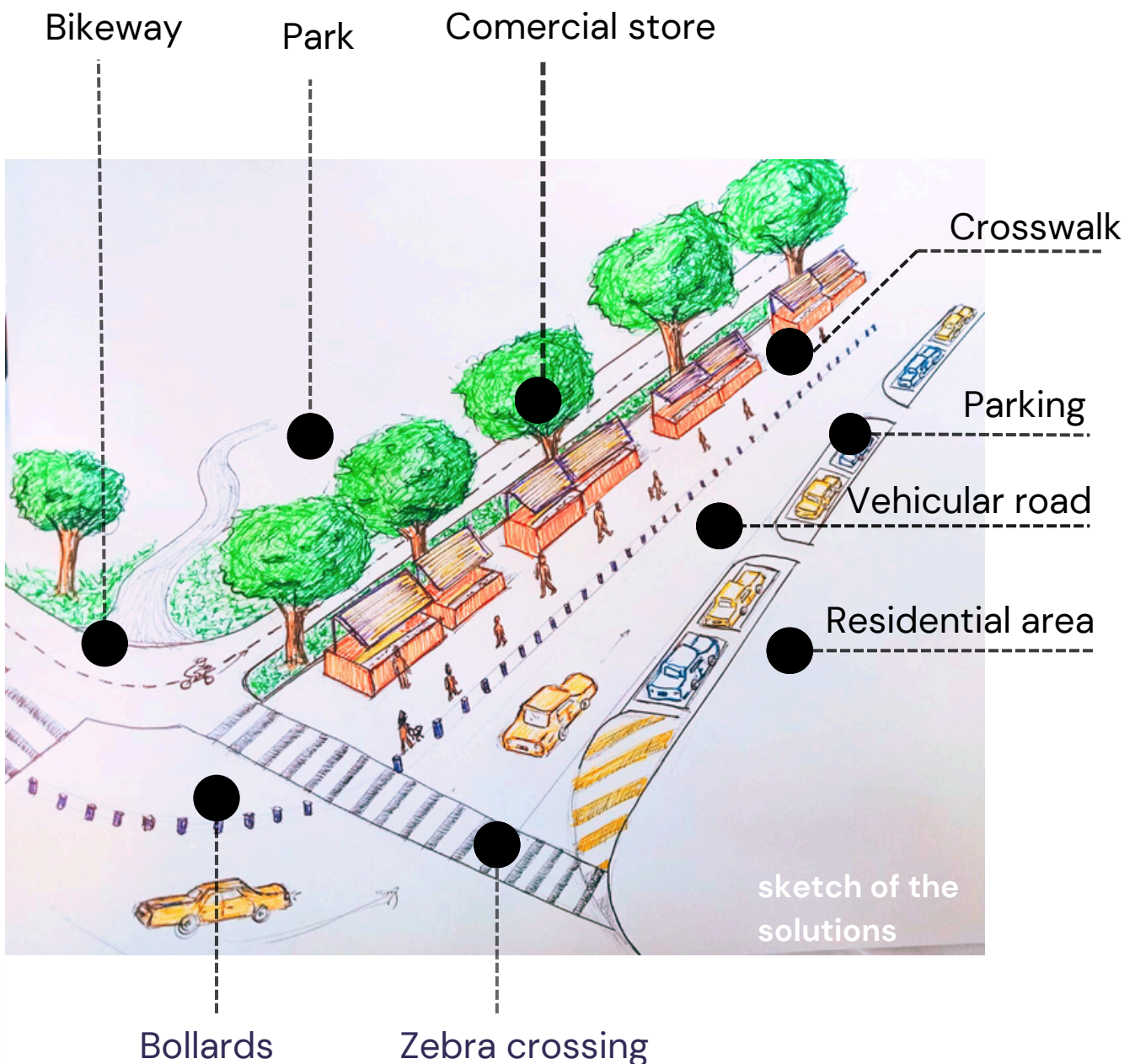
2

This promotes community participation and strengthens ties with the market.

3

It fosters a shared identity and ownership in the area.

# INTEGRATED SOLUTIONS







# BIBLIOGRAPHIC REFERENCES

[https://www.taller13.com/urbanismo-tactico.](https://www.taller13.com/urbanismo-tactico)

<https://es.city-facts.com/curitiba/population>