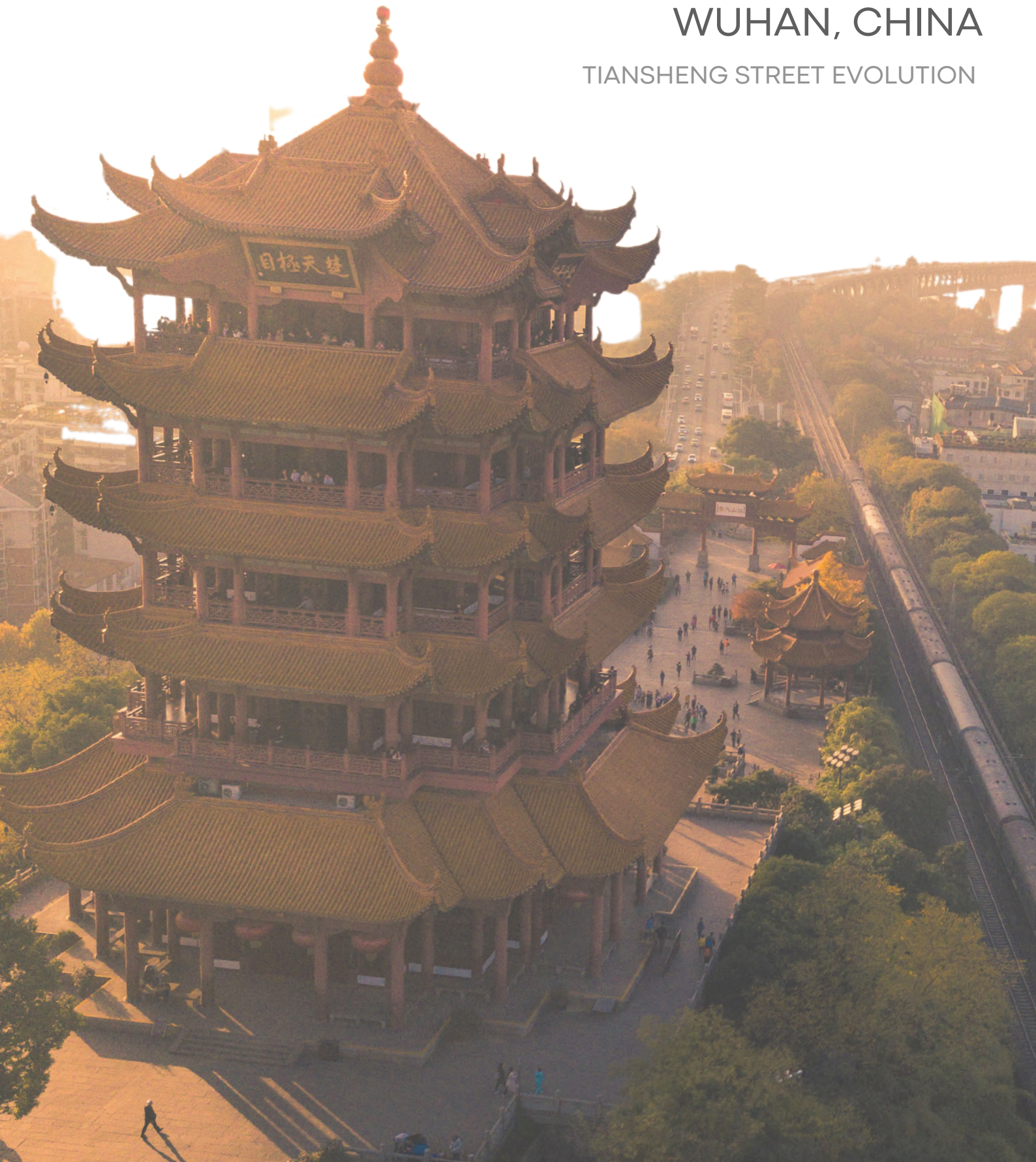


THE STREET LIKE LIVING LEGACY

WUHAN, CHINA

TIANSHENG STREET EVOLUTION

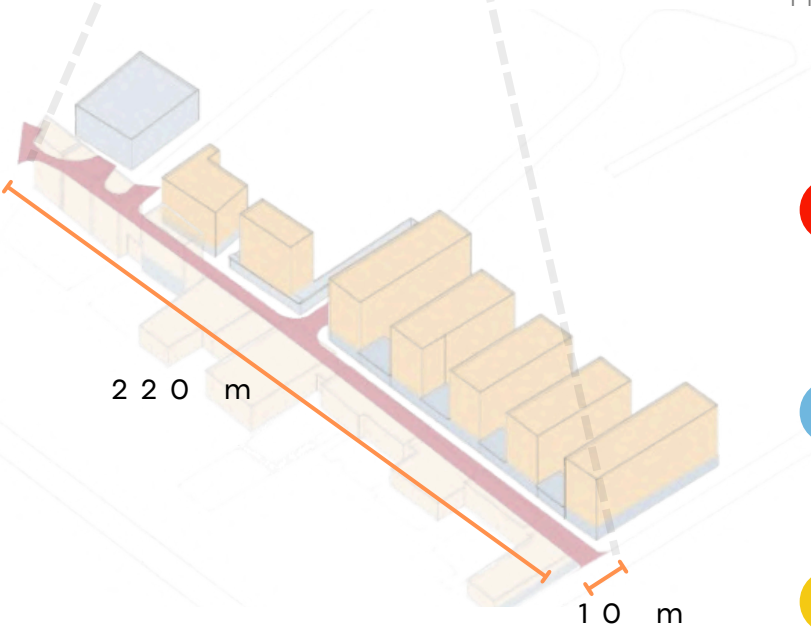


LOCATION |

TIANSHENG, JIANG'AN DISTRICT, WUHAN CITY, HUBEI PROVINCE, CHINA



THE BLOCK IS BORDERED BY AVENUE, STATION STREET AND ZHONGSHAN AVENUE.
30°36'8.05" NORTH LATITUDE
114°18'14.98" EAST LONGITUDE



TIANSHENG STREET

It is a distinctive residential street within the historic district of Hanko.

YANGTZE RIVER

YOUYI STREET

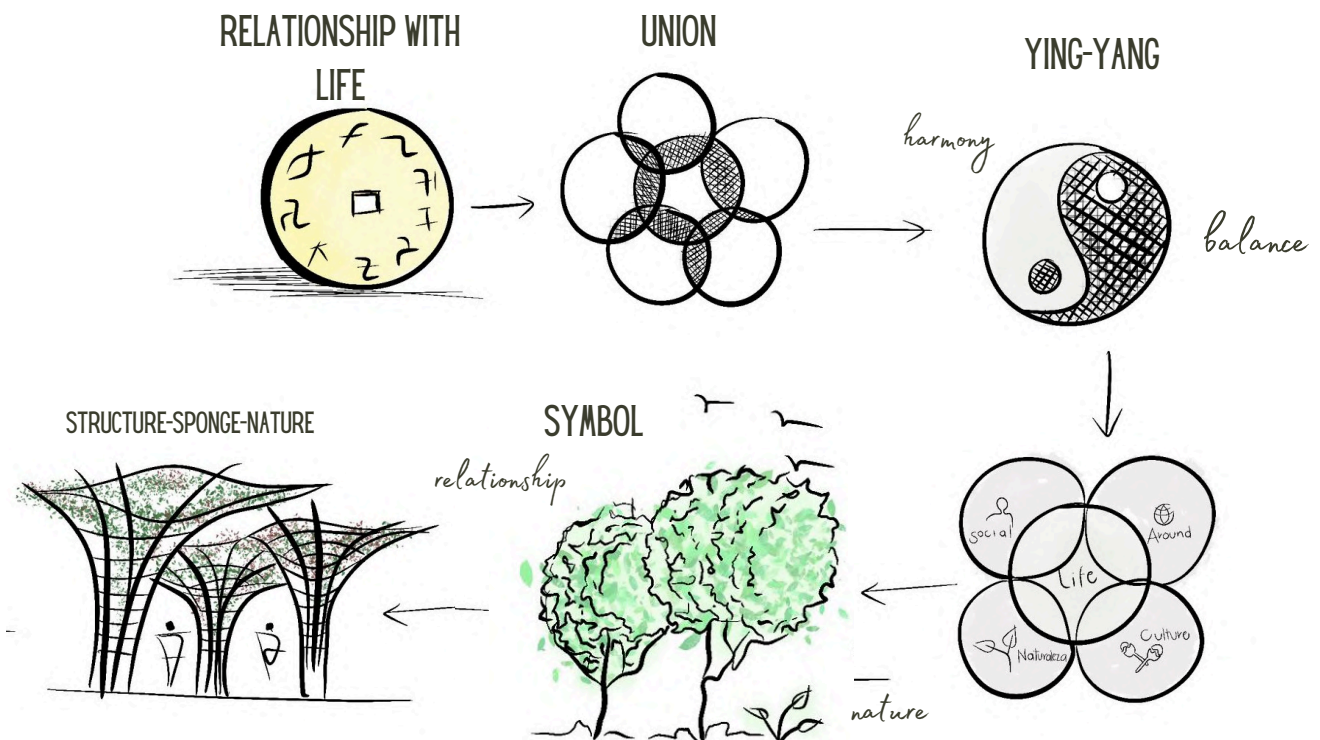
GONG'AN STREET

Hankou Railway Station and Yuehan Pier bring in large numbers of passengers, who gather around the station road to form prosperous downtown areas with tea houses, wineries, hotels, shops, dance halls, theatres, tea gardens and opium dens.



Historic Architecture: The street reflects a mix of architectural styles including modern and traditional influences, giving it a unique character.

Tiansheng comes alive at night, with many food and entertainment venues, creating a lively atmosphere.



PROBLEMATIC

PROBLEM ANALYSIS



Commercial awnings



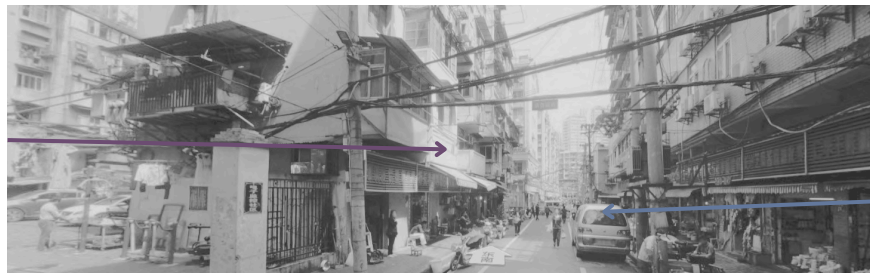
Visual pollution



Low sky visibility: Due to air pollution and excessive urbanization



Lack of aesthetics in the area



Excessive noise in the environment:



Existence of street trading



The majority of the population are older adults



Illegal constructions

CURRENT DESIGN ELEMENTS TO KEEP

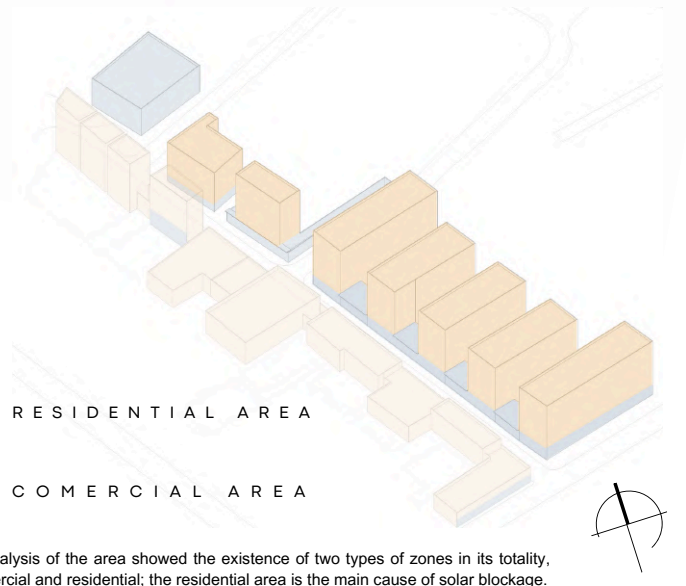
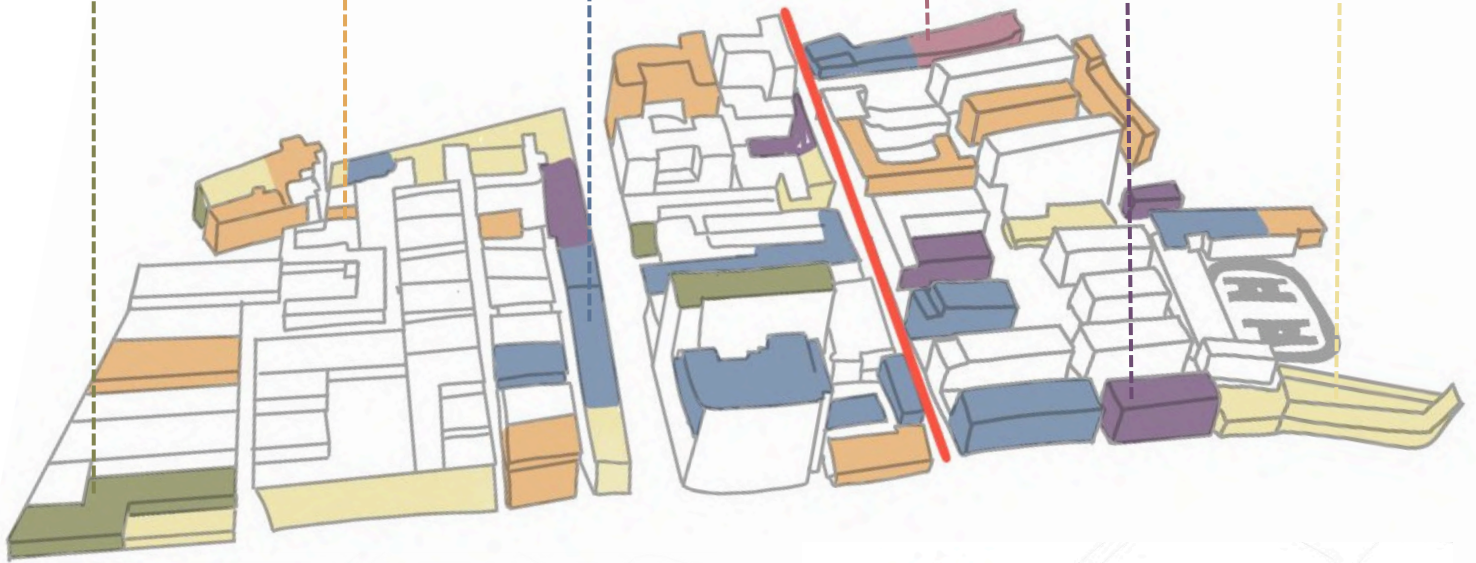


Continue generating these natural interventions



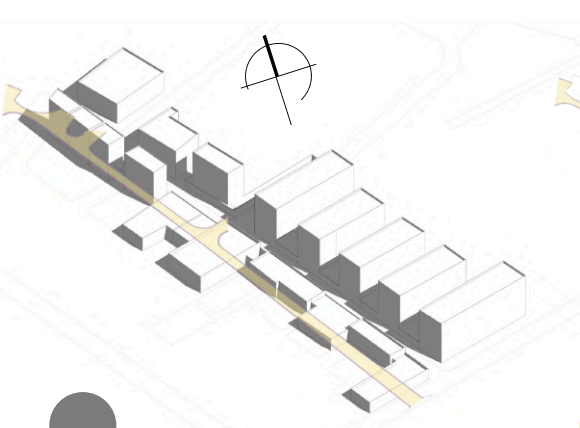
Don't take away the signboard, but rather integrate it

PROJECT PROPOSAL, **GENERATE A SENSE OF BELONGING**



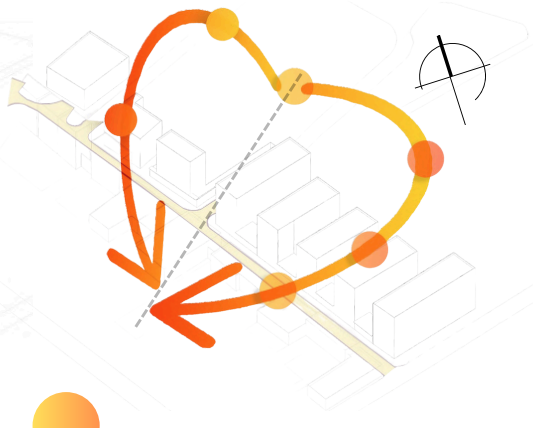
The country emits 27% of the world's carbon dioxide and one-third of greenhouse gases. Population growth is observed and land redensification has been used to allow for green areas.

CLIMATE ANALYSIS | CLIMATE OF THE AREA



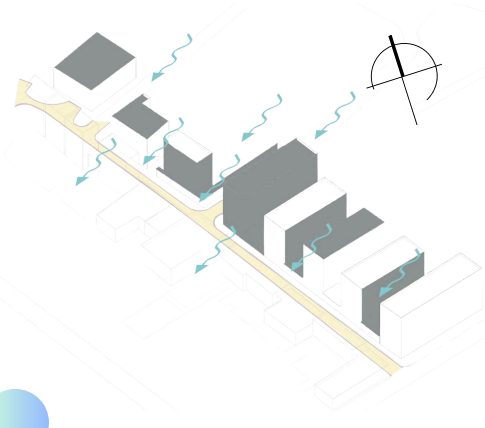
SOLAR INCIDENCE

The diagram shows the shadow caused by the perimeter buildings.



SUNLIGHT

The first part of the year the solar direction is northwest, while the second half of the year it is southwest.



PREVAILING WINDS

- Spring (March to May): the predominant winds are from the southwest
- Fall (September to November): During this season, winds tend to blow from the north and northeast, contributing to cooler, drier weather.
- Winter (December to February): The predominant winds are from the northwest.

PROPOSED VEGETATION | VEGETATION OF THE AREA



• OAK



• BAMBOO



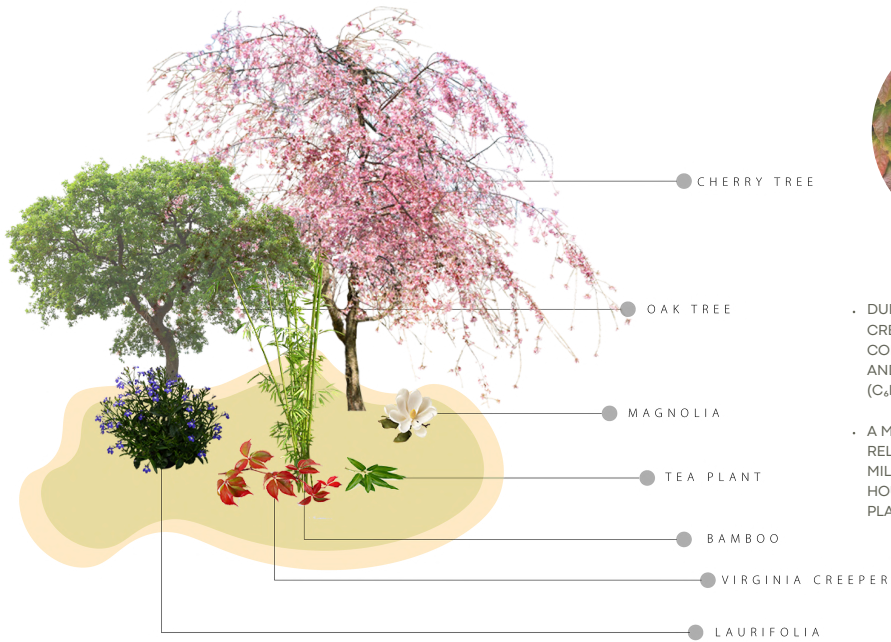
• MAGNOLIAS



• GREEN TEA



• LAURIFOLIAS



MAIN PROPOSAL

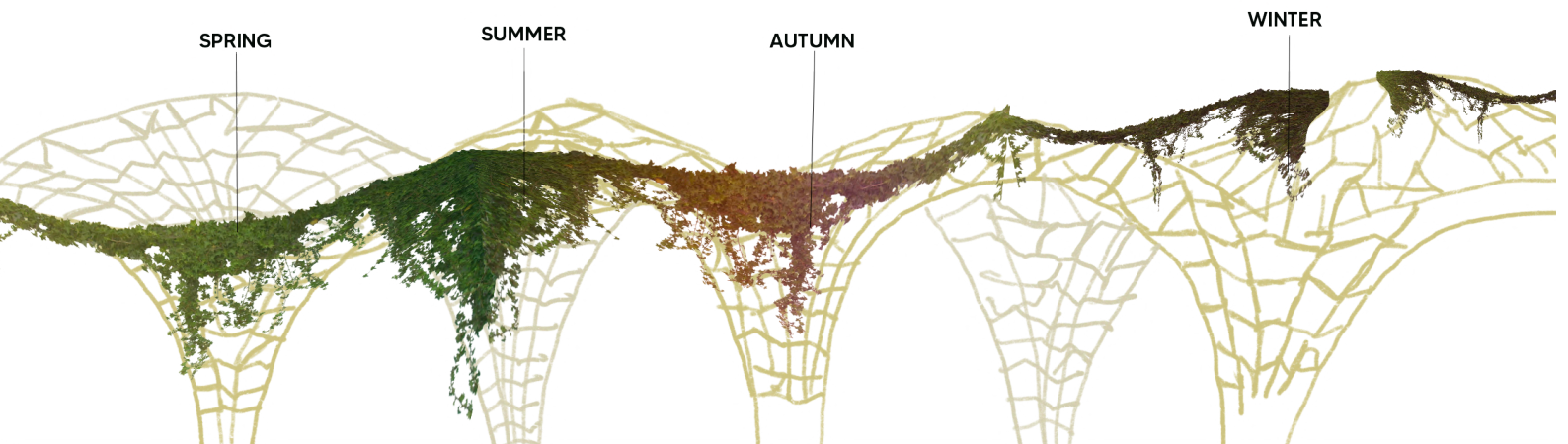


• VIRGINIA VINE

• DURING THE DAY, VIRGINIA CREEPER USES SUNLIGHT TO CONVERT CARBON DIOXIDE (CO₂) AND WATER (H₂O) INTO GLUCOSE (C₆H₁₂O₆) AND OXYGEN (O₂).

• A MEDIUM-SIZED PLANT COULD RELEASE BETWEEN 5 AND 10 MILLILITERS OF OXYGEN PER HOUR FOR EVERY 100 GRAMS OF PLANT MASS.

EVOLUTIONARY ARCHITECTURE DURING THE YEAR



SPRING

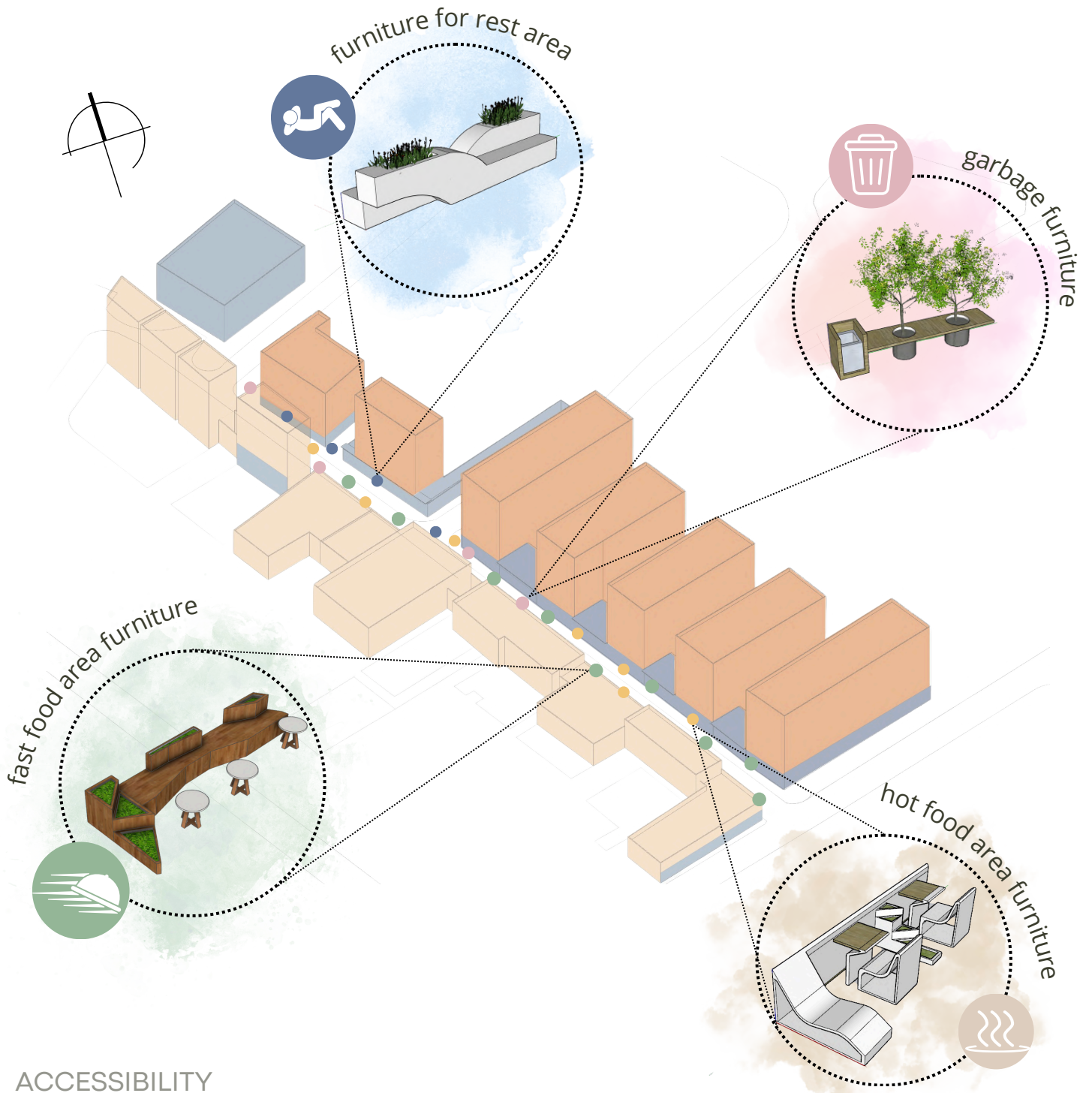
SUMMER

AUTUMN

WINTER

ZONING OF THE STREET TO BE INTERVENED

ZONING OF FURNITURE AND SPACES

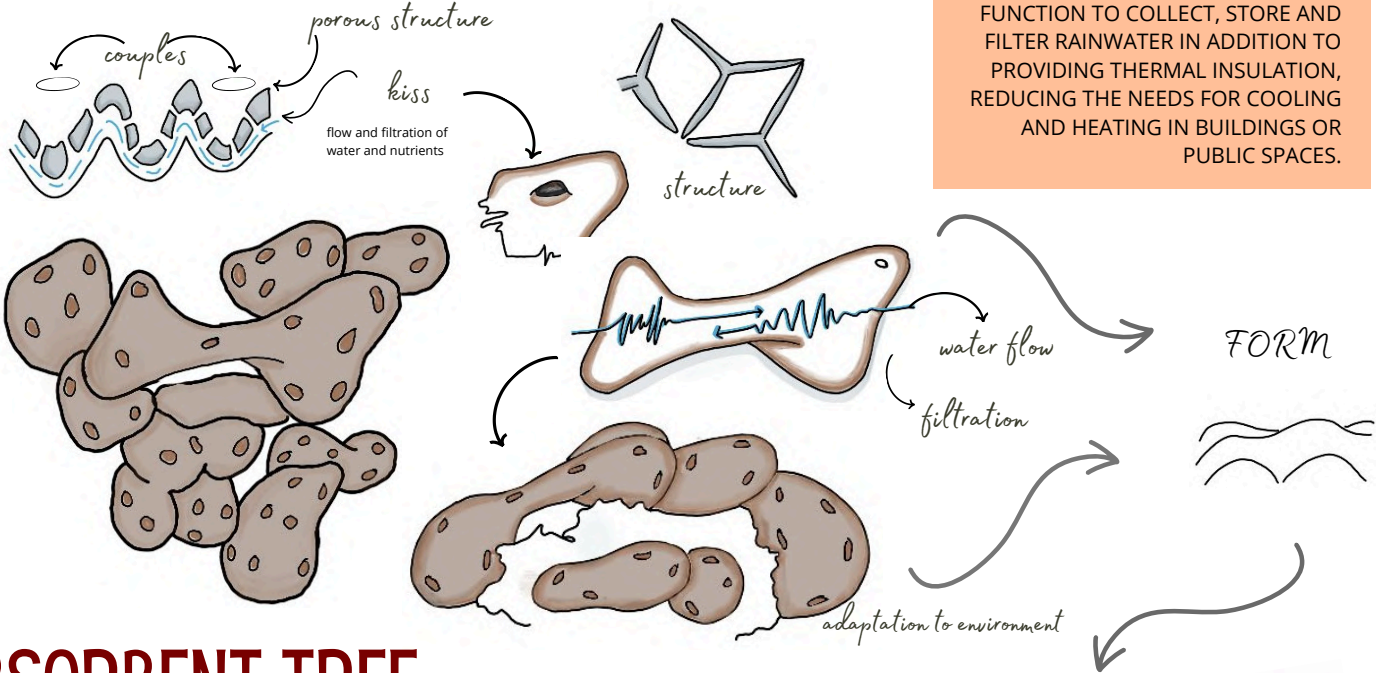


CHONDRILLA NUCULA

SEA SPONGE

ABSORBENT ROOFS INSPIRED BY SEA SPONGES SEA SPONGES HAVE A STRUCTURE THAT MAXIMIZES WATER ABSORPTION WHILE FILTERING THE ENVIRONMENT A ROOF INSPIRED BY ITS STRUCTURE, FORM AND FUNCTION TO COLLECT, STORE AND FILTER RAINWATER IN ADDITION TO PROVIDING THERMAL INSULATION, REDUCING THE NEEDS FOR COOLING AND HEATING IN BUILDINGS OR PUBLIC SPACES.

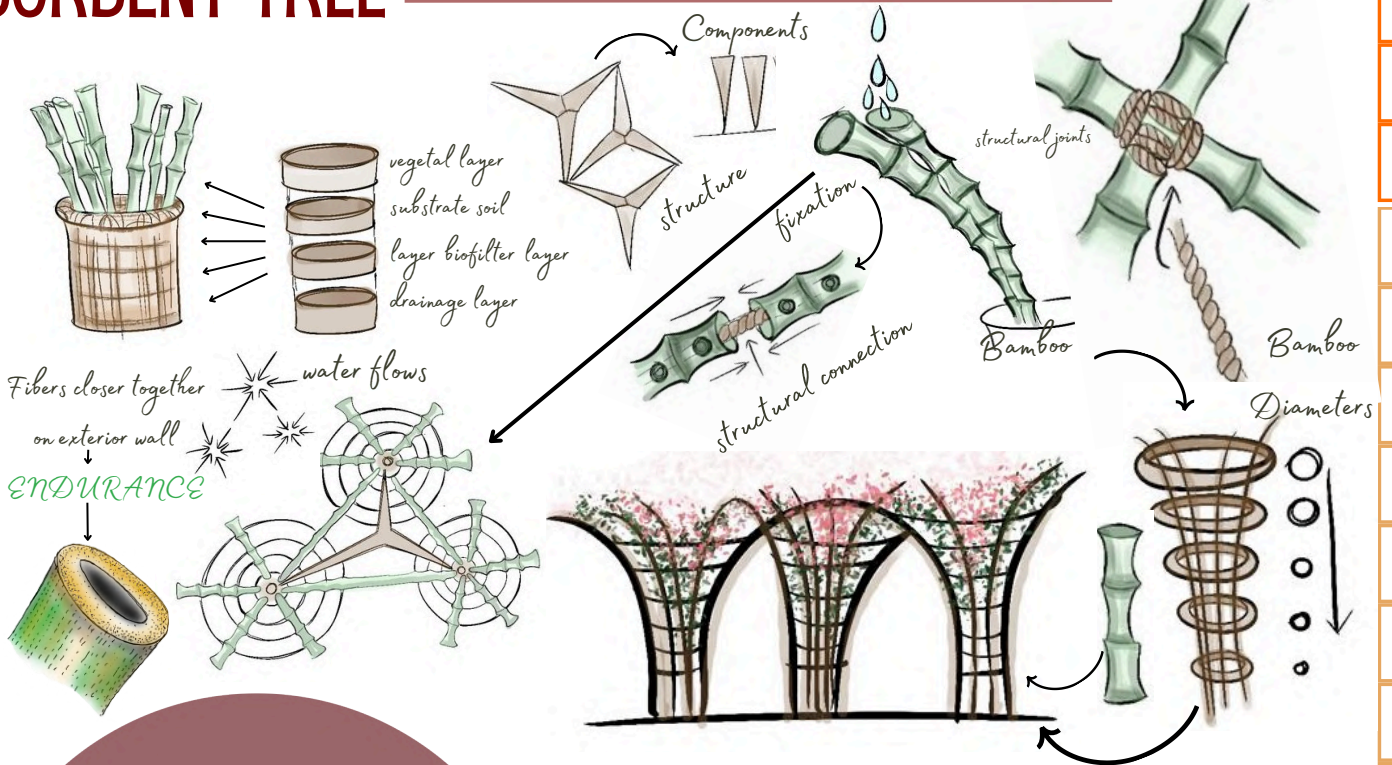
FUNCTION



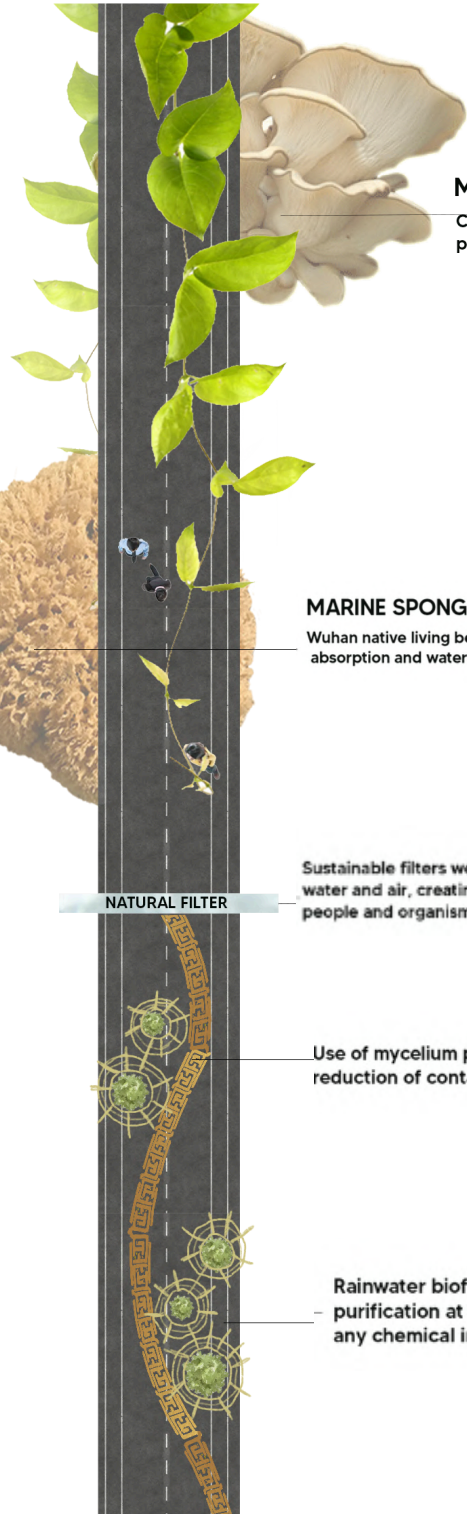
ABSORBENT TREE

STRUCTURE

THE STREET LIKE LIVING LEGACY



THE STREET AS A LIVING LEGACY



MICELIO

C02-absorbing fungus that is currently used for panels that provide healthy environments.

MARINE SPONGE

Wuhan native living being that is distinguished by its moisture absorption and water uptake.

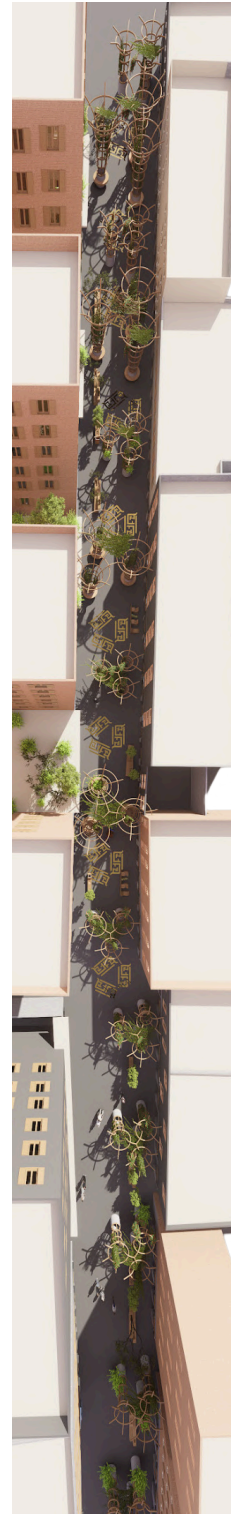
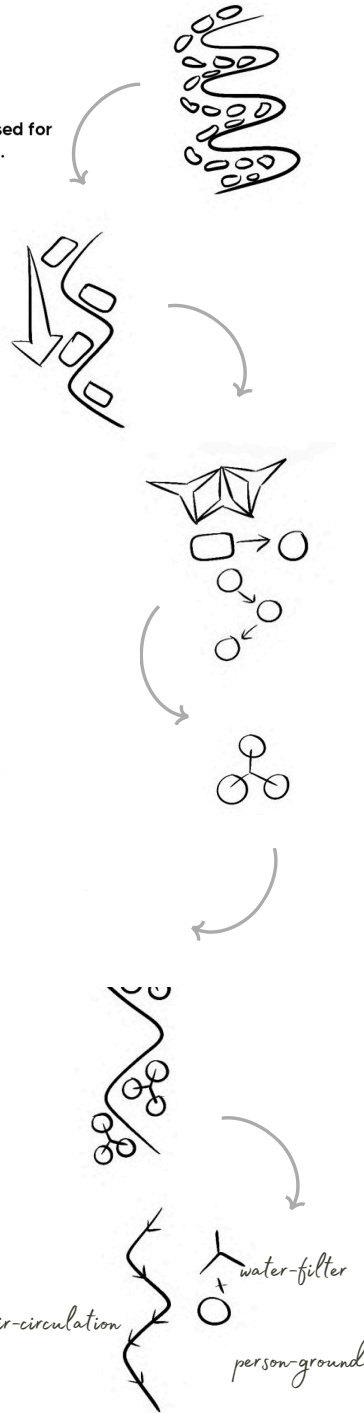
NATURAL FILTER

Sustainable filters were designed for two important points, water and air, creating healthy environments for people and organisms.

Use of mycelium panels in furniture coatings for the reduction of contaminating agents

Rainwater biofilters that allow the use and purification at the same time and without any chemical intervention

water structure and flow



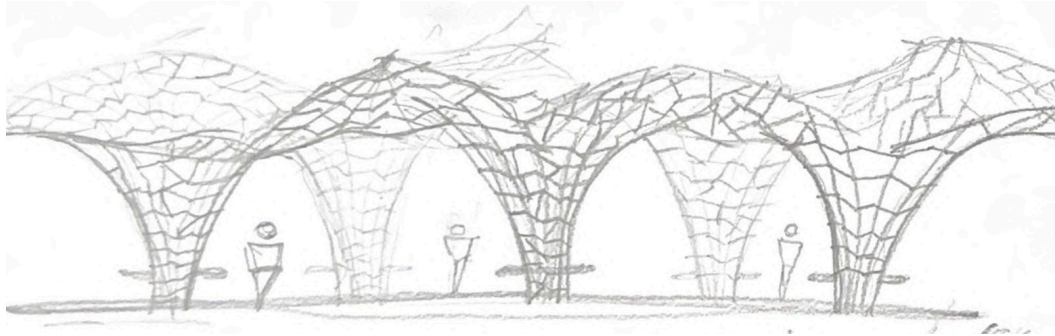
MASTERPLAN



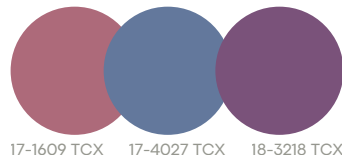
PROJECT | DESIGN PROPOSAL

THE STREET LIKE LIVING LEGACY

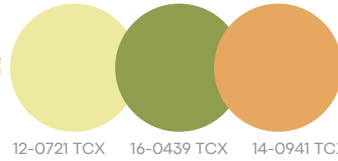
SKETCHES



COLOR PALETTE

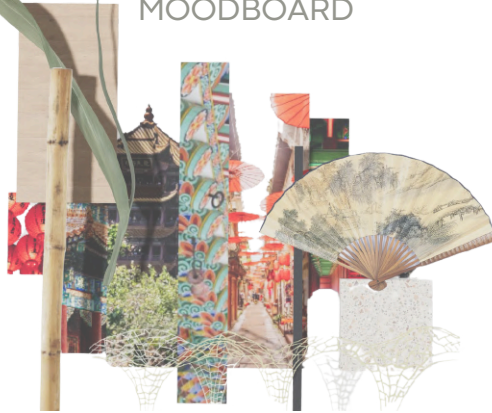


17-1609 TCX 17-4027 TCX 18-3218 TCX



12-0721 TCX 16-0439 TCX 14-0941 TCX

MOODBOARD

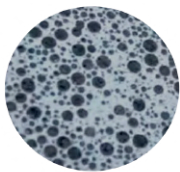


SUSTAINABLE MATERIALS

DESIGN PROPOSAL



BAMBOO



BIOCEMENT



ROPE

