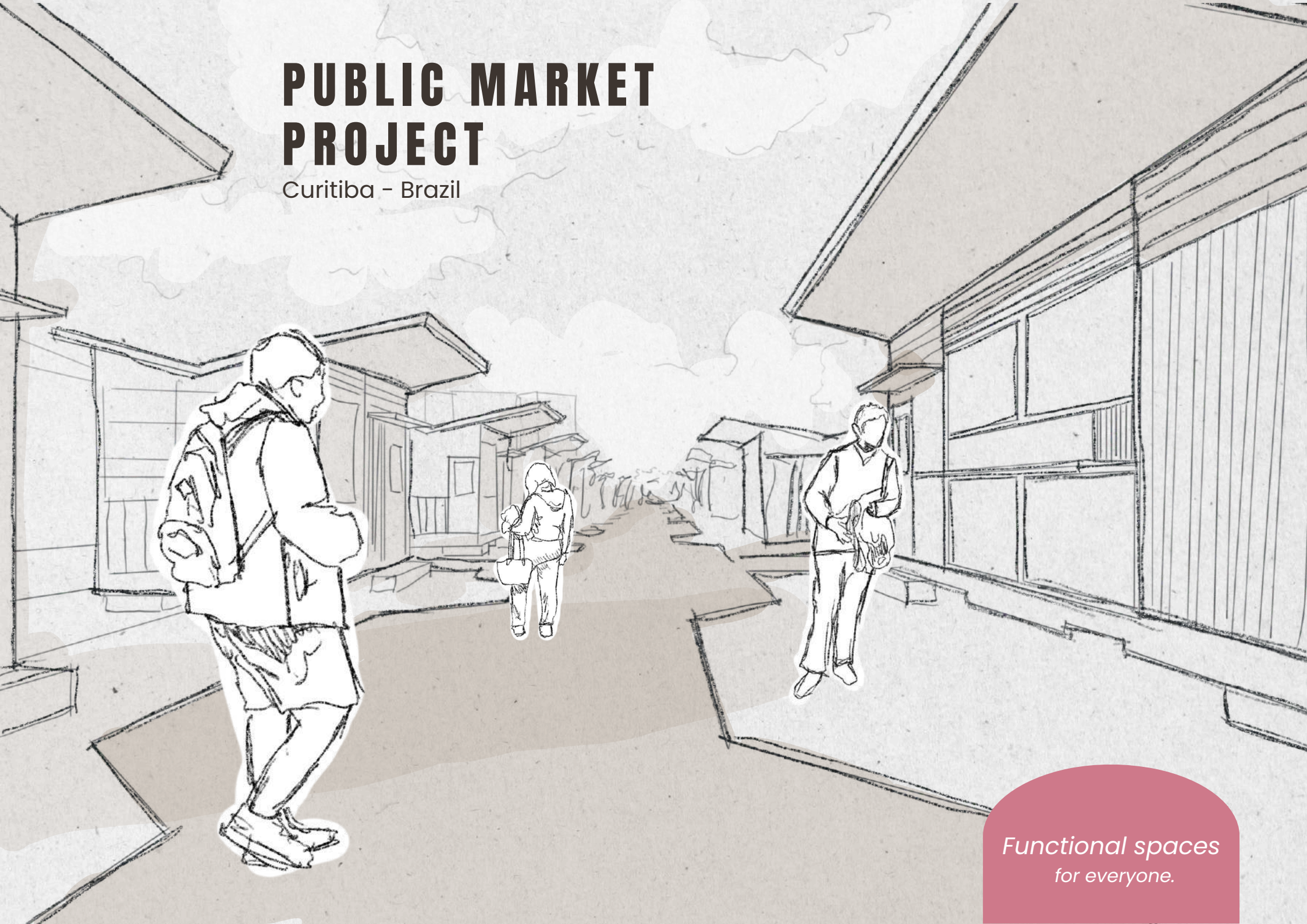


PUBLIC MARKET PROJECT

Curitiba - Brazil

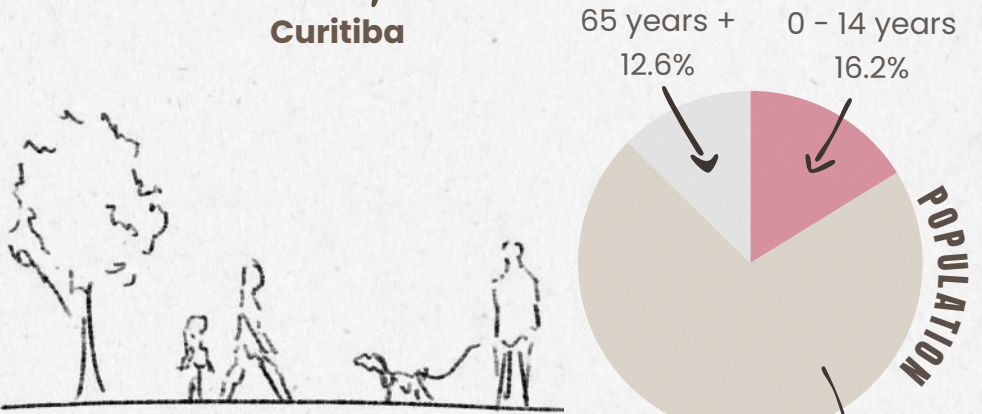


*Functional spaces
for everyone.*



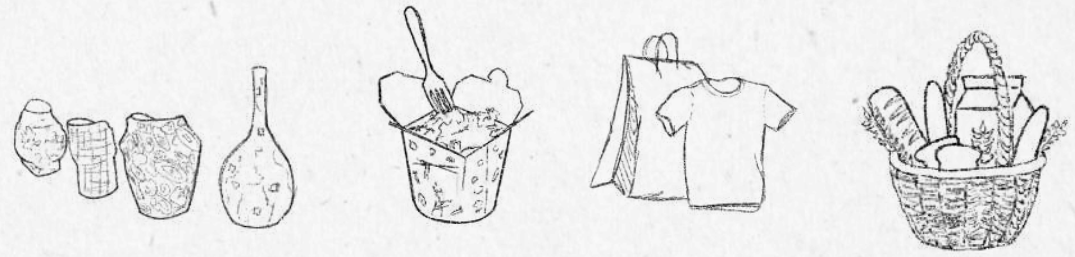
LOCATION

C. Padre Anchieta



The climate is humid subtropical, with mild summers and harsh winters.

CONTEXT ABOUT THE SITE

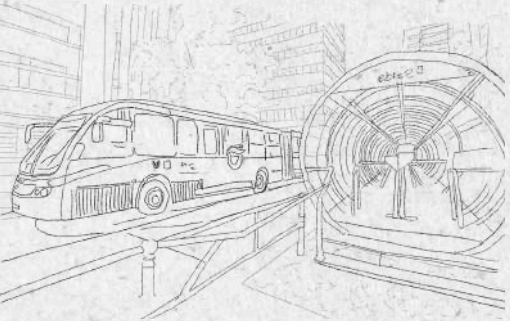


PUBLIC MARKET

Re create a space for everyone.

Support the development of local businesses.

Static and dynamic elements.



ZONING

Market



Different users

Residences

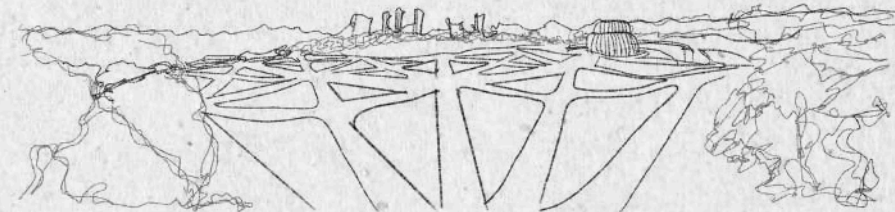
Handcrafts

WALKER

VEGETATION Green areas

FOOD

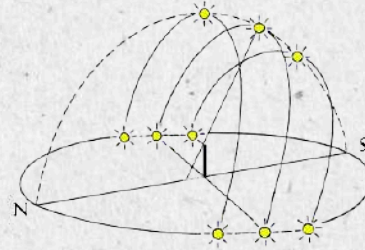
SPONTANEITY



CONCEPT ABOUT THE PROPOSAL



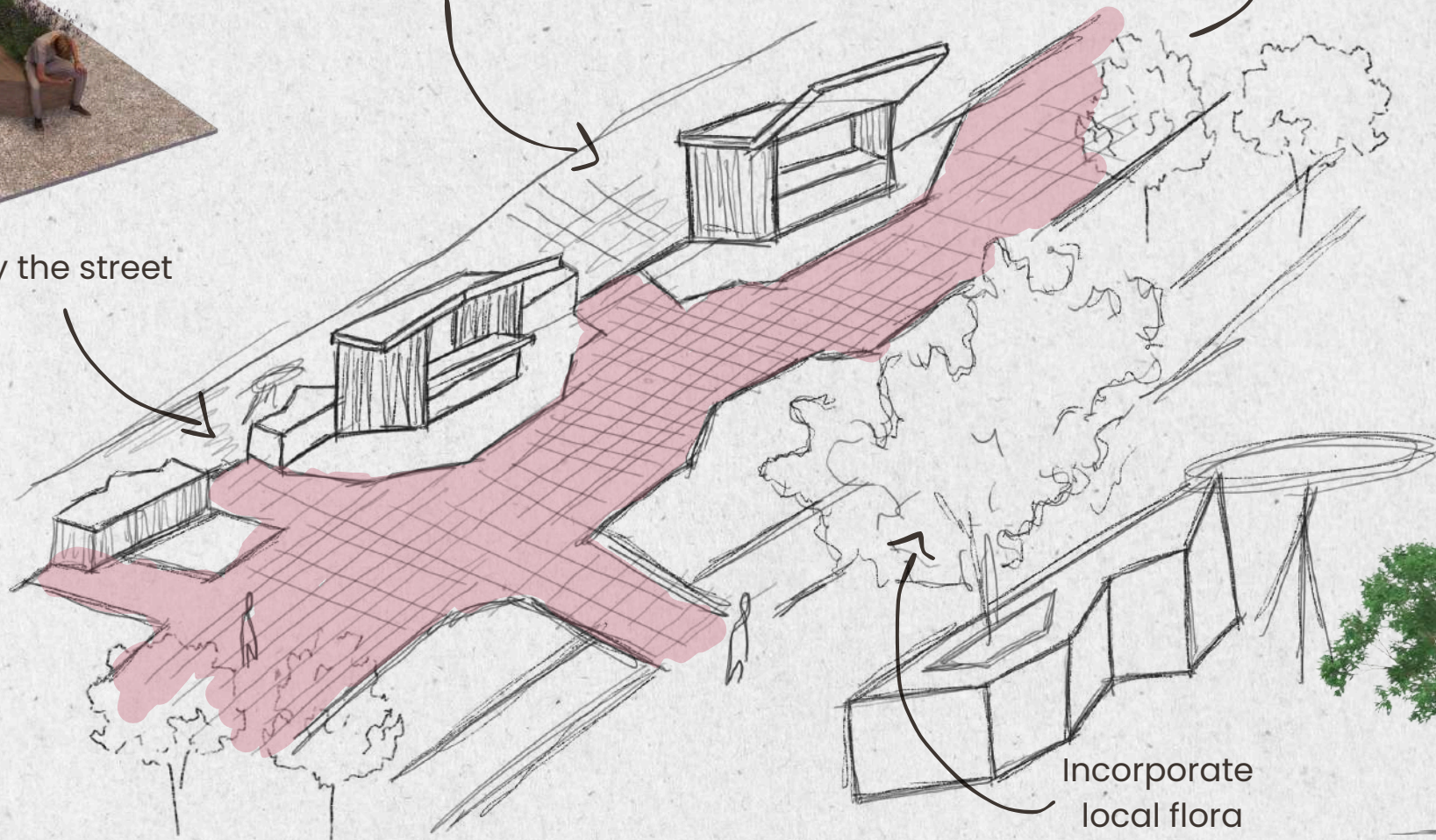
Bioclimatic and sustainable designs



Incorporate local typologies



Beautify the street



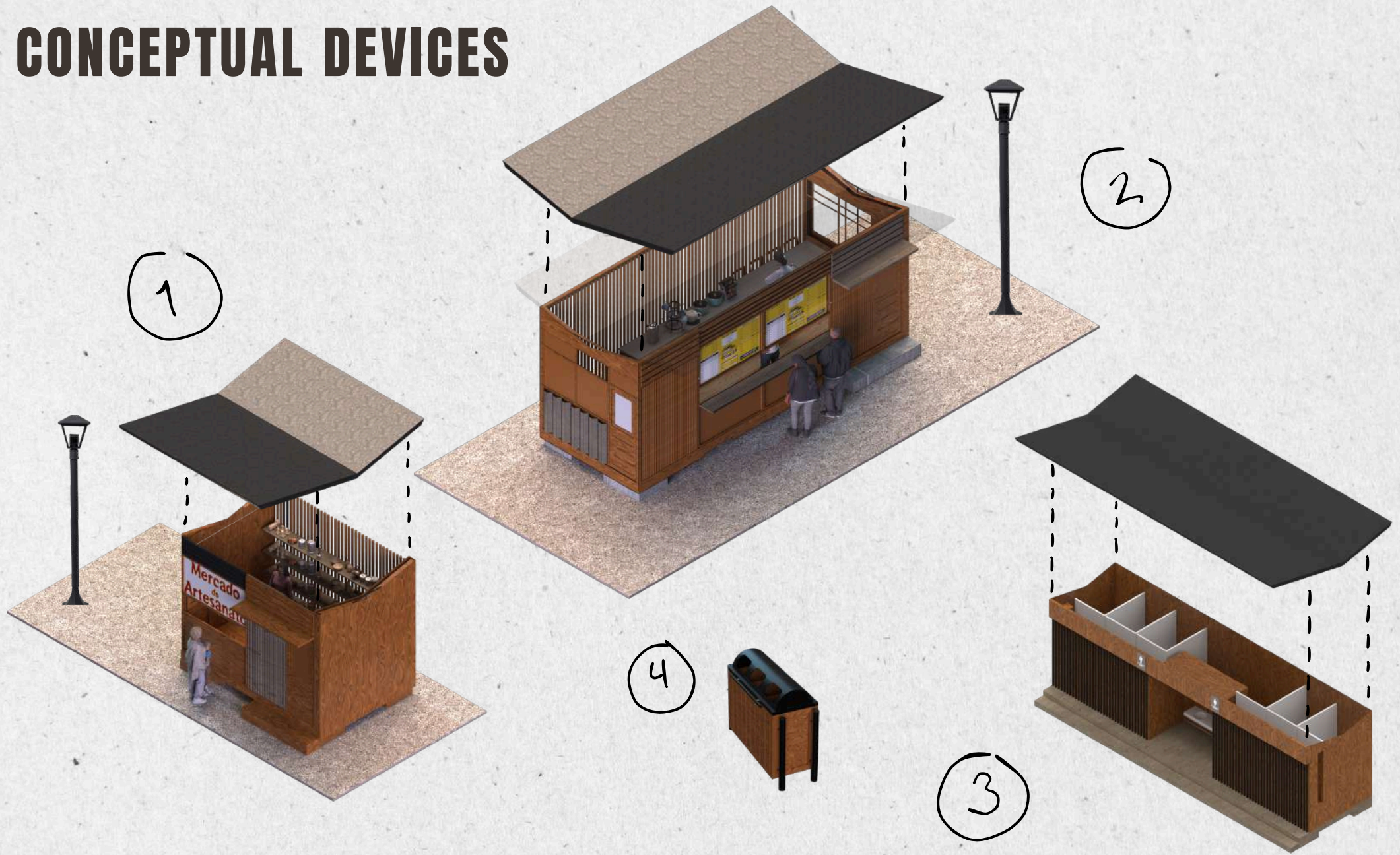
Incorporate local flora



These key points are used more than anything to take into account the important and historical development that has had Curitiba, and we believe that they are those elements that are key for every area to be functional and can be really inhabited and transited.

Focus on increasing the schedule and allowing other activities to be used, which will suggest that it really works.

CONCEPTUAL DEVICES

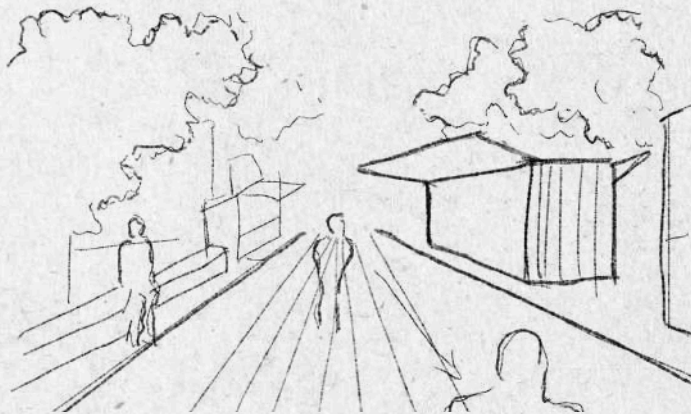
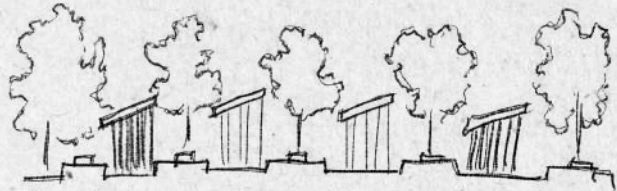
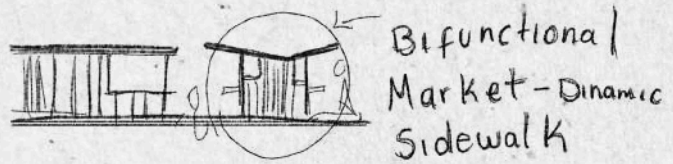


These devices will not only be a solution for each trader in question of need, but also seek to implement a design focusing on the bioclimatic and sustainable

CONCEPTUAL STATIC DEVICES



VIEWS AND DIMENSIONS



ENDEMIC VEGETATION



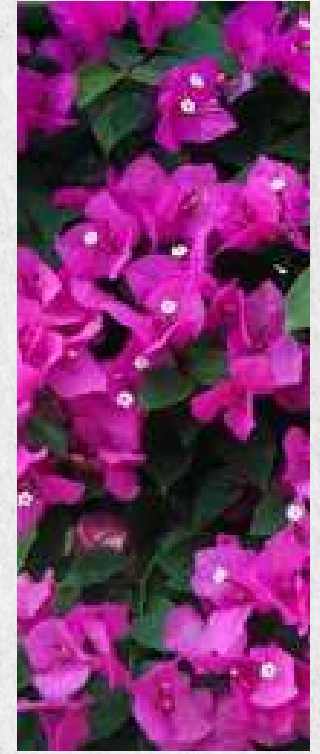
Oiti



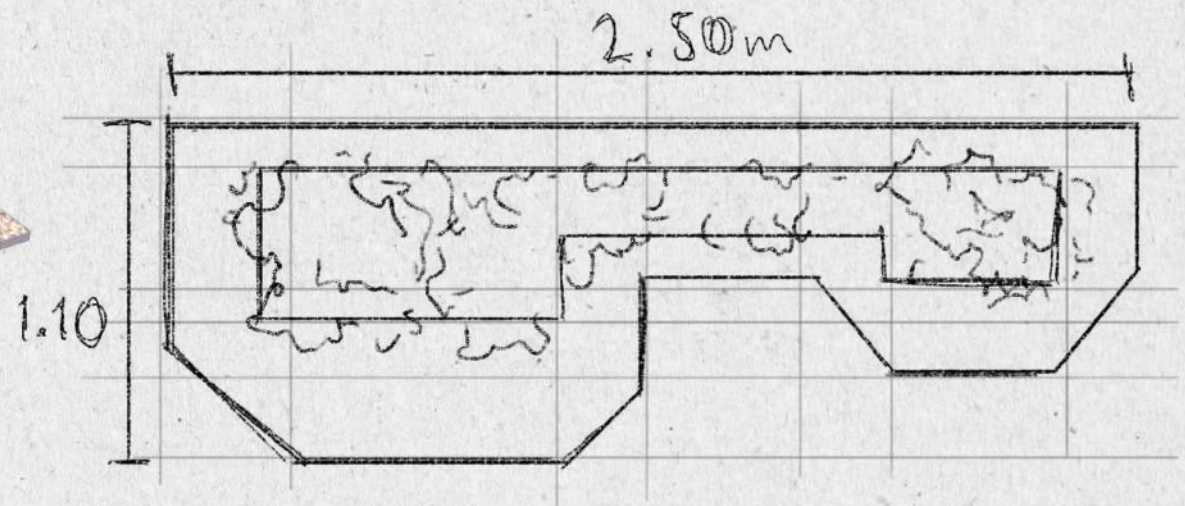
Alegria de casar

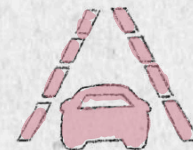
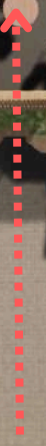
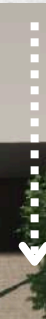
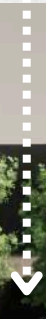
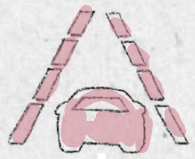


Ipê-rosa



Buganvilla





FUNCTIONAL SPACES FOR EVERYONE.



Our concept is based more than anything in thinking about all types of users that will transit the area and how it will be a space created for their different needs and schedules, since the time in which the market occurs in this area are Sundays from 8:00 am to 13:00 p.m. All taking into account this versatility talking about that we have a bifunctionality of static and mobile elements.